



# MONTCLAIR 4

4 BEDS | 2.5 BATHS | 1,930 SQFT

## Features You'll Love

- Timeless coastal-inspired architecture with inviting curb appeal
- Open-to-below foyer creating an airy and welcoming entry experience
- Open-concept kitchen, dining, and living areas designed for everyday living and entertaining
- Covered front and rear porches that extend the living space outdoors
- First-floor owner's suite with a private bath and spacious walk-in closet
- Flexible second-floor layout ideal for growing families or overnight guests



Left Side Elevation

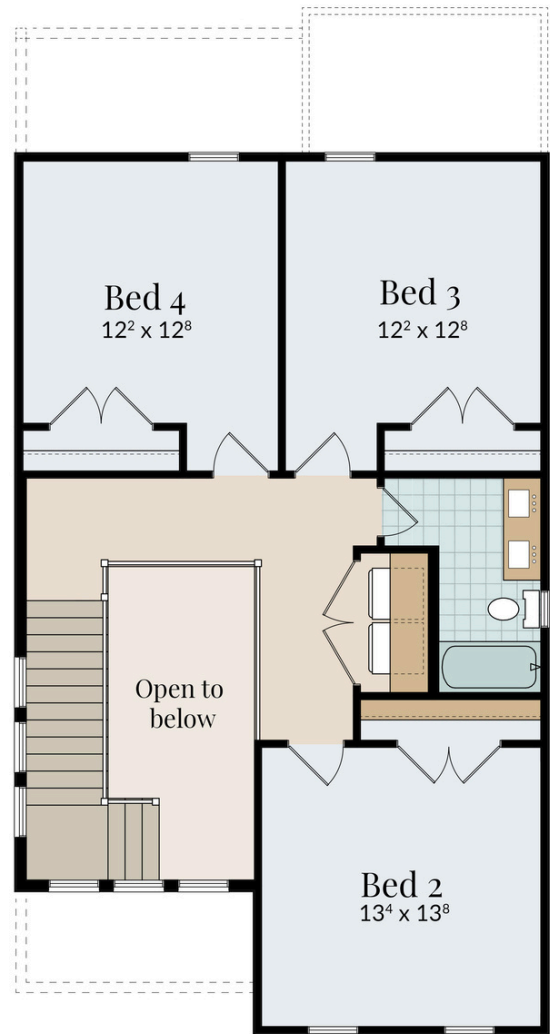


Rear Elevation



Right Side Elevation

# MONTCLAIR 4



Second Floor

Conditioned Square Footage: 1,930  
Width: 31'-0" Depth: 48'-0"  
Utility/Covered Porch Square Footage: 270

For illustration purposes only. All representations, dimensions and specifications may vary from those depicted and are subject to revision, change and/or substitution without notice.

