



BOGG

3 BEDS | 3.5 BATHS | 2,952 SQFT

Features You'll Love

- **Three-story elevated coastal home** for everyday living and coastal lifestyle
- **Two-car garage** with ample storage space and mudroom
- **Kitchen with center island**, large walk-in pantry, and adjacent dining area
- **Master suite** with private bath and spacious walk-in closet
- **Covered front porch** plus spacious rear porch with additional deck for outdoor living



Left Side Elevation



Rear Elevation



Right Side Elevation

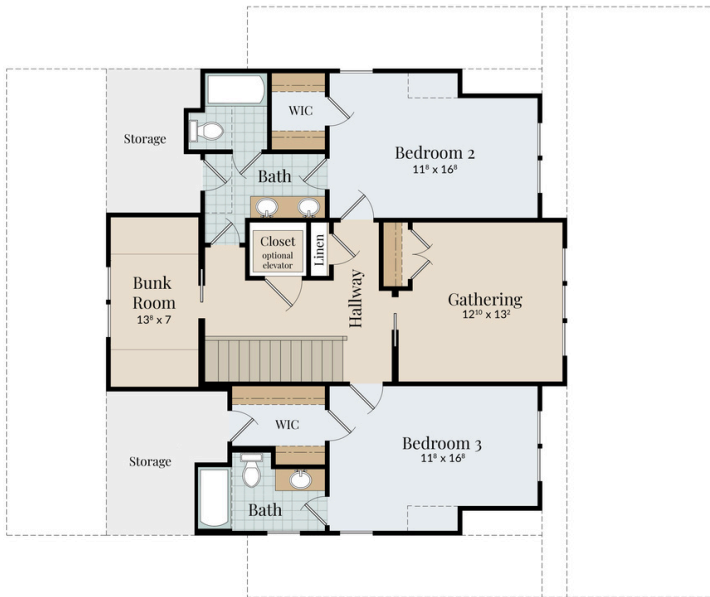
BOGG



Ground Floor



First Floor



Second Floor

Conditioned Square Footage: 2,952
Width: 42'-0" Depth: 55'-6"
Covered Porch Square Footage: 870

For illustration purposes only. All representations, dimensions and specifications may vary from those depicted and are subject to revision, change and/or substitution without notice.

