



BOCA BAY

4 BEDS | 4.5 BATHS | 3,053 SQFT

Features You'll Love

- **Three-story elevated coastal home** for everyday living and coastal lifestyle
- **Two-car garage** with ample storage space
- **Open-concept great room** that flows between kitchen, dining, and living spaces
- **Kitchen with a center island** with a large walk-in pantry
- **Master suite** with private bath and dual closets
- **Rear porch and upper balcony** for outdoor living



Left Side Elevation

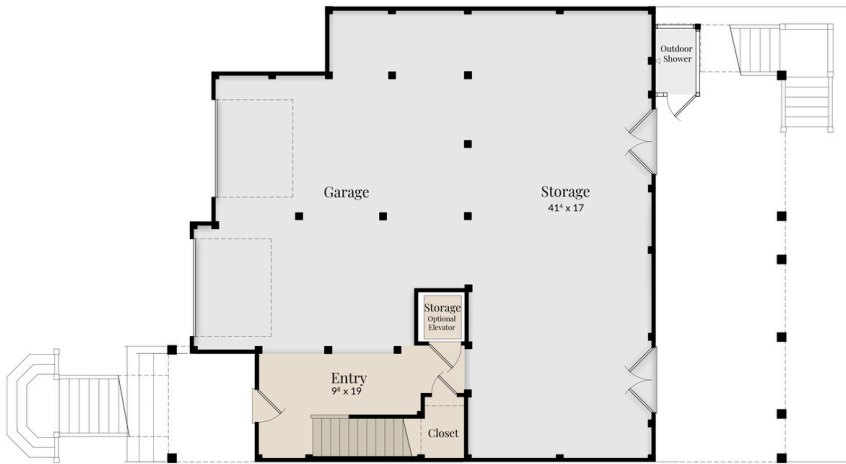


Rear Elevation



Right Side Elevation

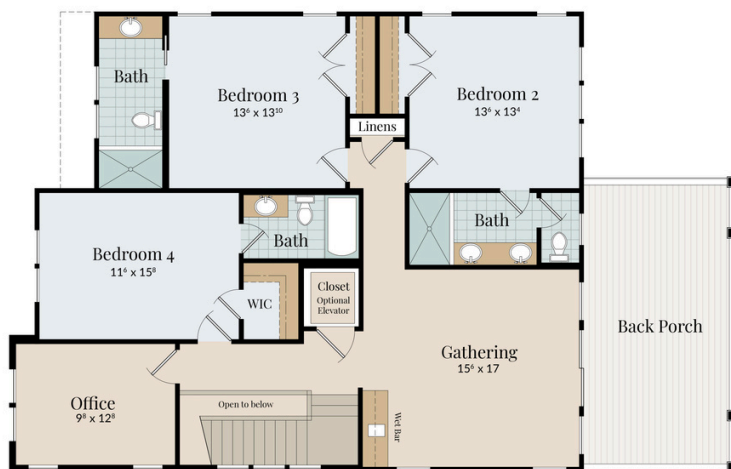
BOCA BAY



Ground Floor



First Floor



Second Floor

Conditioned Square Footage: 3,053
Width: 42'-0" Depth: 57'-0"
Covered Porch Square Footage: 801

For illustration purposes only. All representations, dimensions and specifications may vary from those depicted and are subject to revision, change and/or substitution without notice.

