



# INLET POINT

4 BEDS | 3.5 BATHS | 3,157 SQFT

## Features You'll Love

- Generous covered porches on ground & first floors
- Open-concept kitchen, dining, and living areas with abundant natural light & breakfast room
- Main-level primary suite with large his and her walk-in closets and adjacent porch
- Optional residential elevator
- Laundry room with great counter space
- Includes upstairs bonus room/ flex space



Left Side Elevation

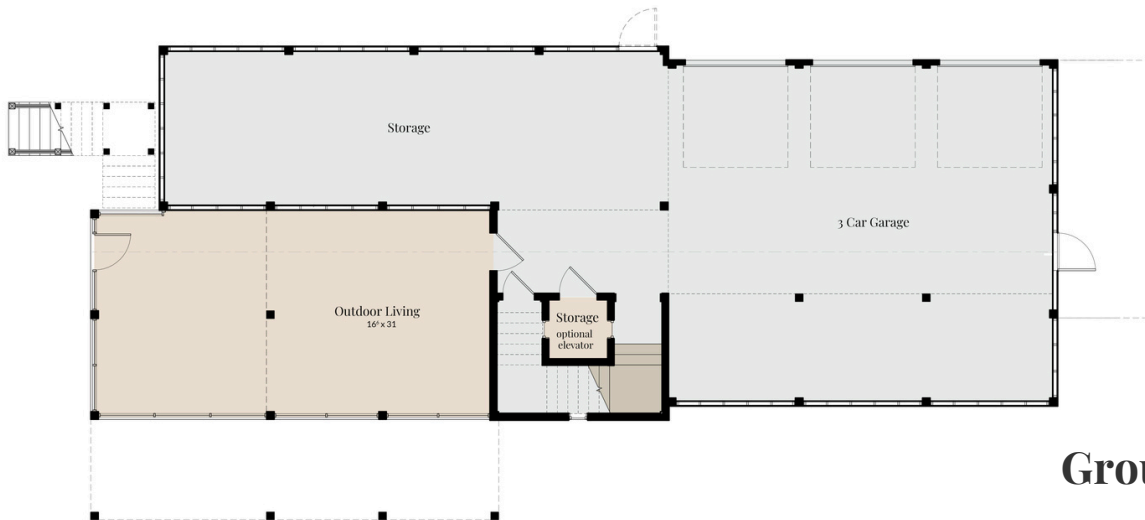


Rear Elevation



Right Side Elevation

# INLET POINT



**Ground Floor**



**First Floor**



**Second Floor**

**Conditioned Square Footage: 3,157**  
**Width: 37'-8" Depth: 85'**  
**Ground Floor/Porch Square Footage: 2,803**

For illustration purposes only. All representations, dimensions and specifications may vary from those depicted and are subject to revision, change and/or substitution without notice.

