



FOUR WATERS

3 BEDS | 3.5 BATHS | 2,470 SQFT

Features You'll Love

- Large columned front entry porch
- Open-concept kitchen, dining, and living areas with abundant natural light & breakfast nook
- Main-level primary suite with tray ceiling, large walk-in closet, sitting room, and zero entry shower
- Rear porch off family room perfect for entertaining or relaxing outdoors
- Laundry room conveniently located off the 2-car side-entry garage
- Includes upstairs bonus room/ flex space



Left Side Elevation



Rear Elevation

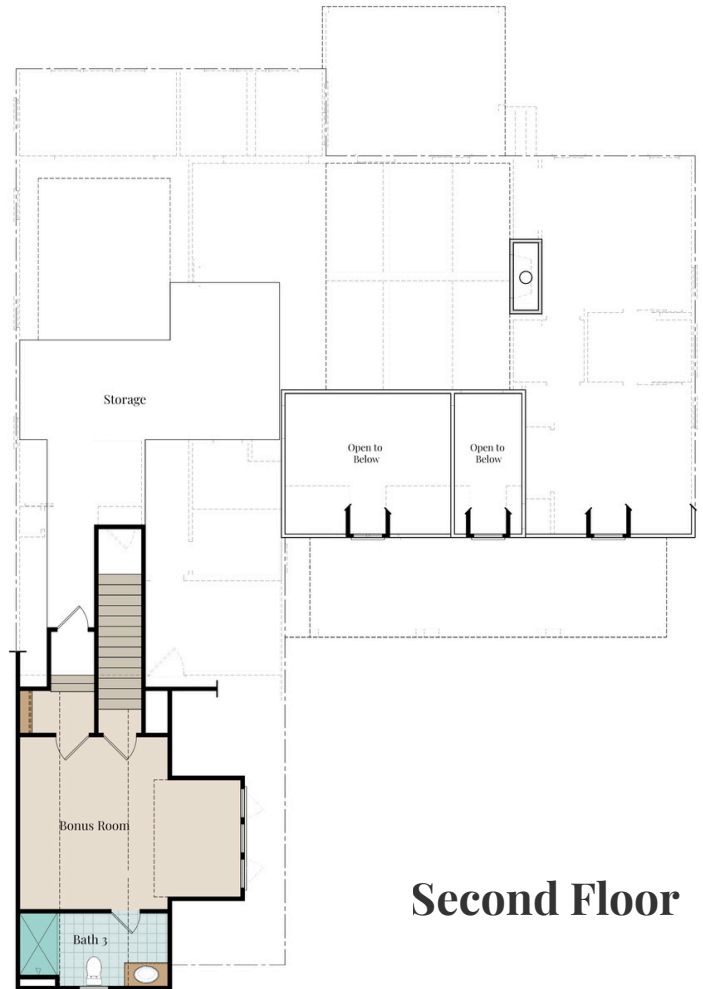


Right Side Elevation

FOUR WATERS



First Floor



Second Floor

Total Square Footage: 2,470
Width: 54'-6" Depth: 79'-0"
Garage/Covered Porch Square Footage: 931

For illustration purposes only. All representations, dimensions and specifications may vary from those depicted and are subject to revision, change and/or substitution without notice.

