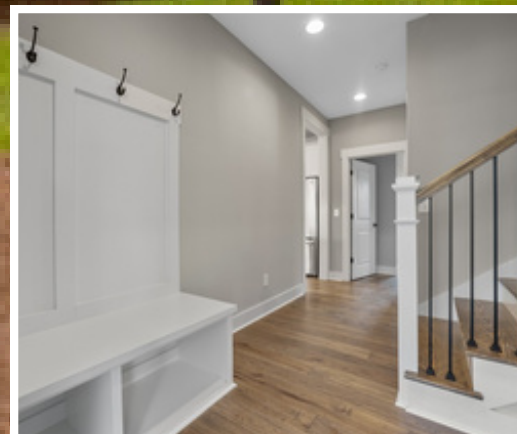


THE

# *Cape Fear*

COLLECTION

*A Signature Series by Airlie Homes*





*Timeless Coastal Designs  
Crafted for Modern Life*



# ABOUT US

---

We believe the home-building process should be as rewarding as the finished product. That's why we focus on clear communication, personalized service, and transparency from the very first conversation to move-in day. Our team walks alongside every client, offering guidance, support, and expertise at each step, ensuring a building journey that is exciting, smooth, and full of trust. At Airlie Homes, you're never just a project—you're part of our community.

Rooted in the spirit of coastal Carolina, Airlie Homes is proud to bring a blend of craftsmanship, resilience, and timeless design to every home we create. Our commitment to integrity guides everything we do—from the materials we select to the promises we keep. Inspired by the easy beauty of coastal living, we strive to build homes that stand the test of time and bring everyday joy to the families who call them their own.

*At Airlie Homes, your dream home is our passion.*



**TYLER GUNN**

Founder & Principal

**MIKE SANTILLI**

Founder & Principal

# ABOUT THE COLLECTION

Welcome to The Cape Fear Collection, a refined portfolio of coastal-inspired home designs thoughtfully created by Airlie Homes. Rooted in timeless architecture and built with modern families in mind, these plans capture the essence of Southern charm while delivering everyday comfort and enduring value.

Each home plan touts curb appeal and welcoming front entrances. A blend of open-concept living, rear or side opening garages and flexible space to grow are the hallmarks of the Cape Fear Collection. This collection reflects the craftsmanship and coastal lifestyle that define Airlie Homes.

## Collection Features:

- Spacious porches (some wrap-around style)
- Second floor bonus room/flex space
- Open concept living with high ceilings
- Large master suites with double vanity sinks and walk-in closets



*Carolina Tide*





Right Side Elevation



Left Side Elevation

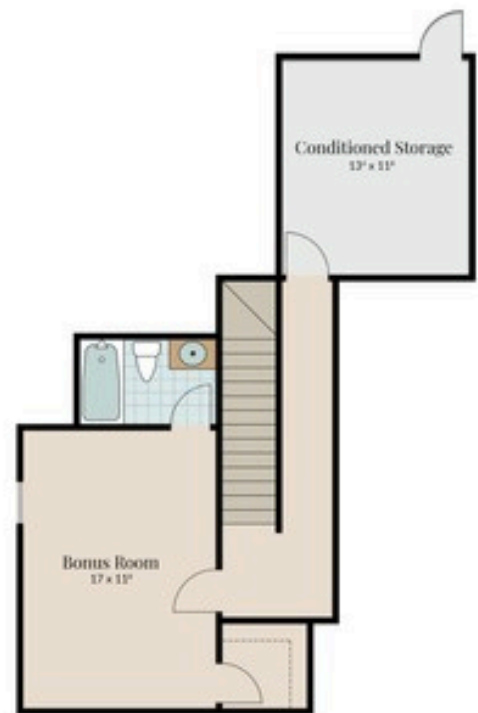


Rear Elevation

3 BEDROOM  
3 BATHROOM  
2 CAR GARAGE  
2,545 SQ. FT.



**First Floor**



**Second Floor**

Total Square Footage: 2,545

Width: 40'-6" Depth: 89'-8"

Garage/Covered Porch Square Footage: 1,099

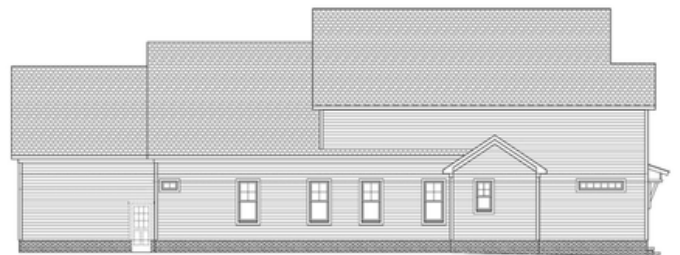
*the*  
*Seabreeze*



# THE SEABREEZE



Right Side Elevation



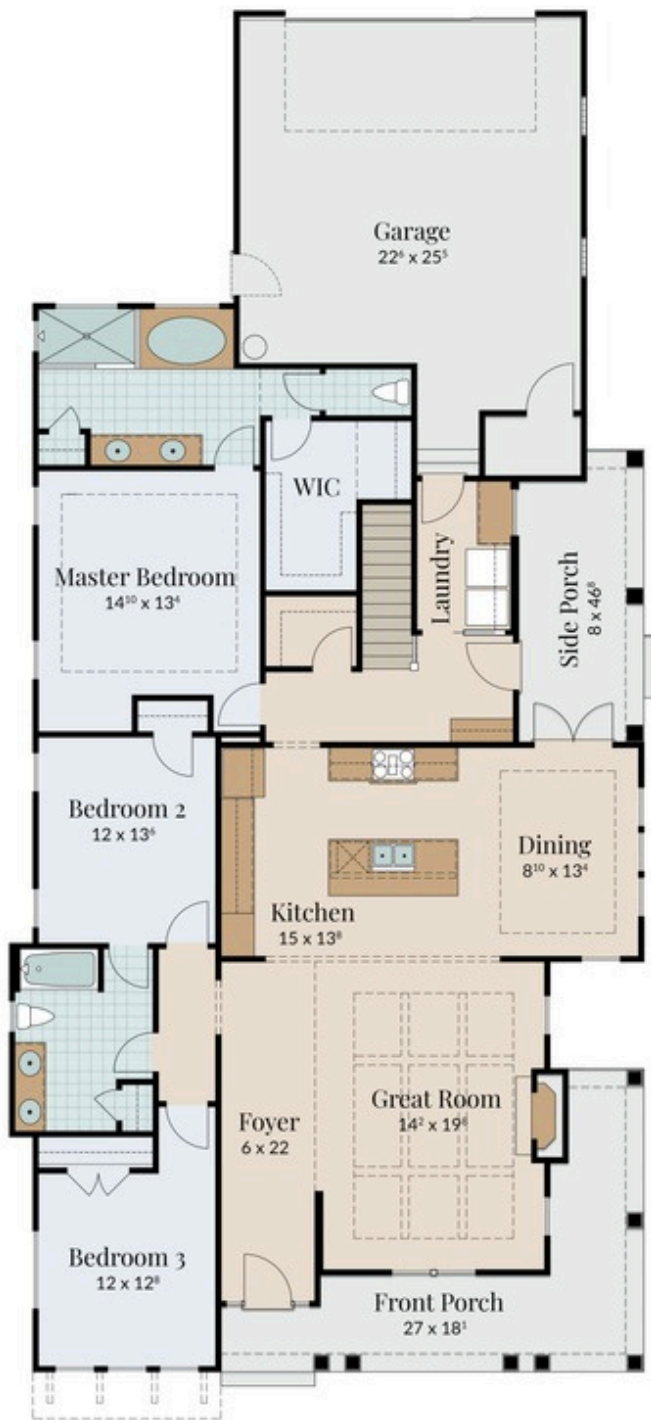
Left Side Elevation



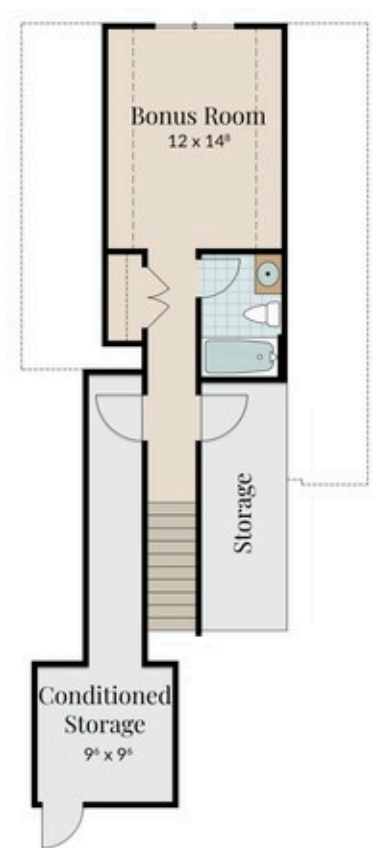
Rear Elevation

3 BEDROOM  
3 BATHROOM  
2 CAR GARAGE  
2,545 SQ. FT.

## First Floor



## Second Floor



Total Square Footage: 2,545

Width: 40'-6" Depth: 86'-10"

Garage/Covered Porch Square Footage: 1,060

*the* Camellia



# THE CAMELLIA



Right Side Elevation



Left Side Elevation



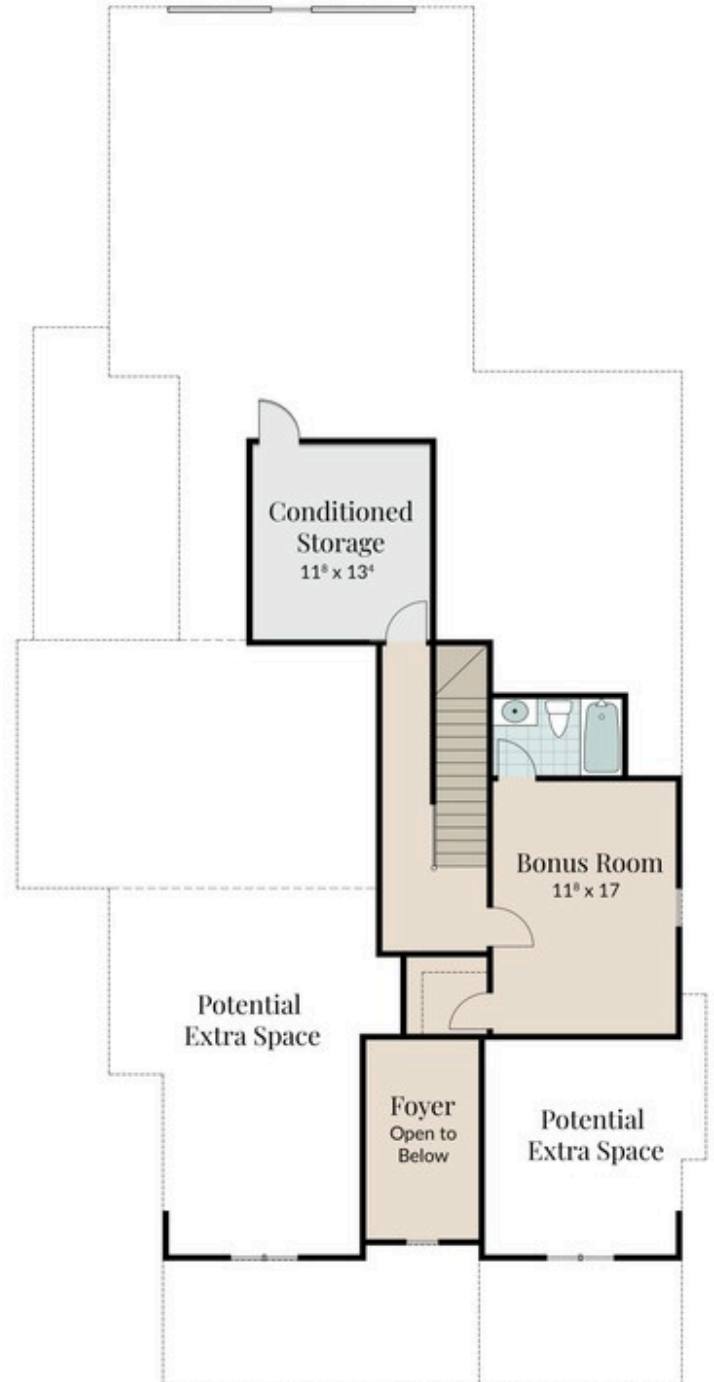
Rear Elevation

3 BEDROOM  
3 BATHROOM  
2 CAR GARAGE  
2,639 SQ. FT.

## First Floor



## Second Floor



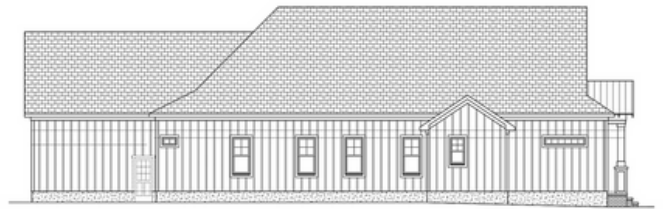
Total Square Footage: 2,639  
 Width: 41'-0" Depth: 88'-10"  
 Garage/Covered Porch Square Footage: 831

*the* **M**asonboro





Right Side Elevation



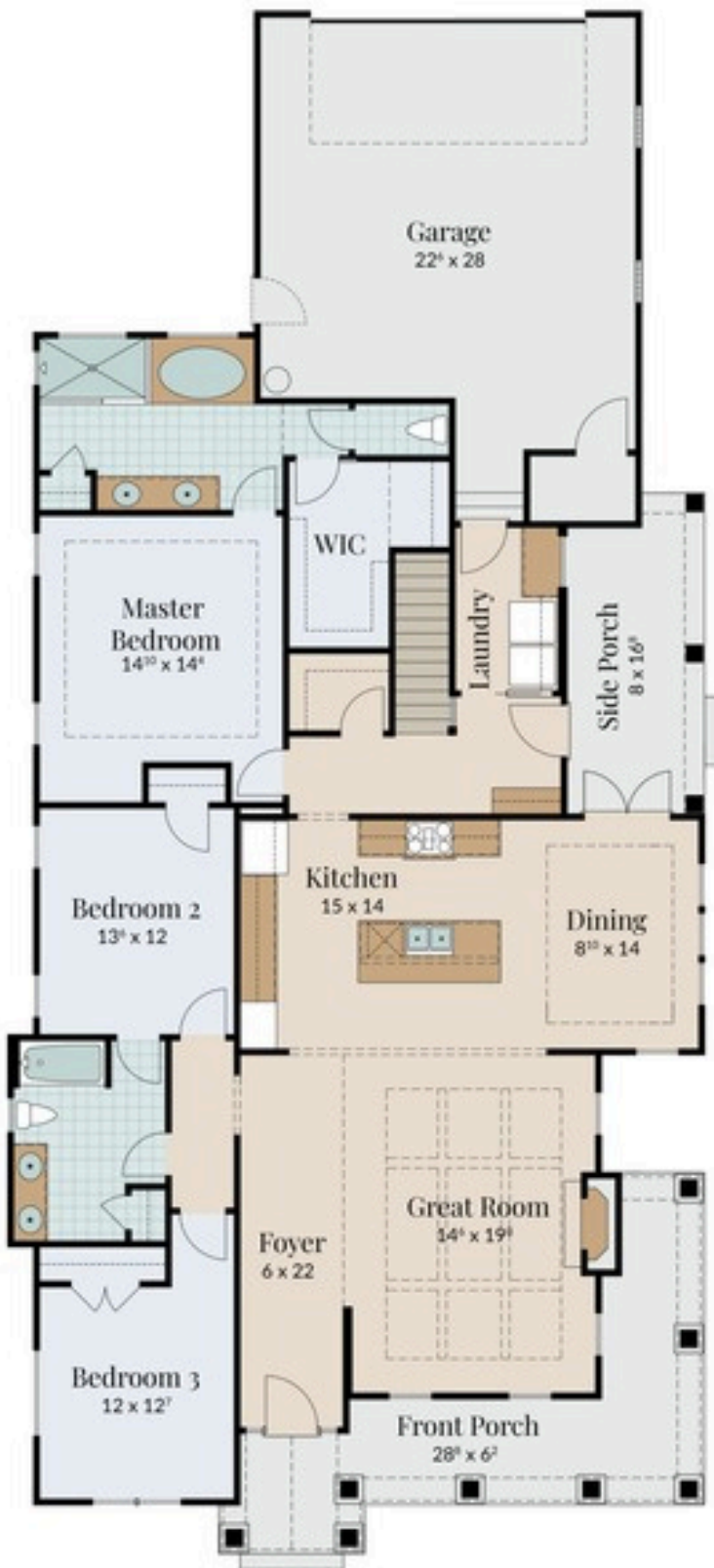
Left Side Elevation



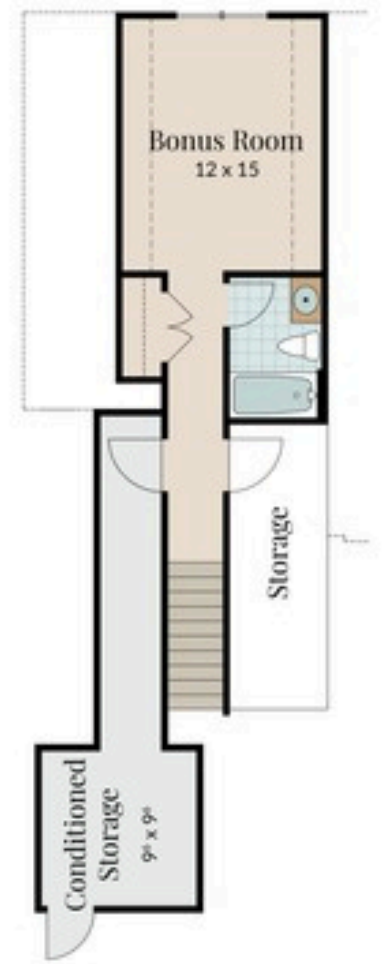
Rear Elevation

3 BEDROOM  
3 BATHROOM  
2 CAR GARAGE  
2,545 SQ. FT.

## First Floor



## Second Floor



Total Square Footage: 2,545

Width: 40'-6" Depth: 89'-8"

Garage/Covered Porch Square Footage: 1,099

*the* *Open Tide*



# THE OPEN TIDE



Right Side Elevation



Left Side Elevation



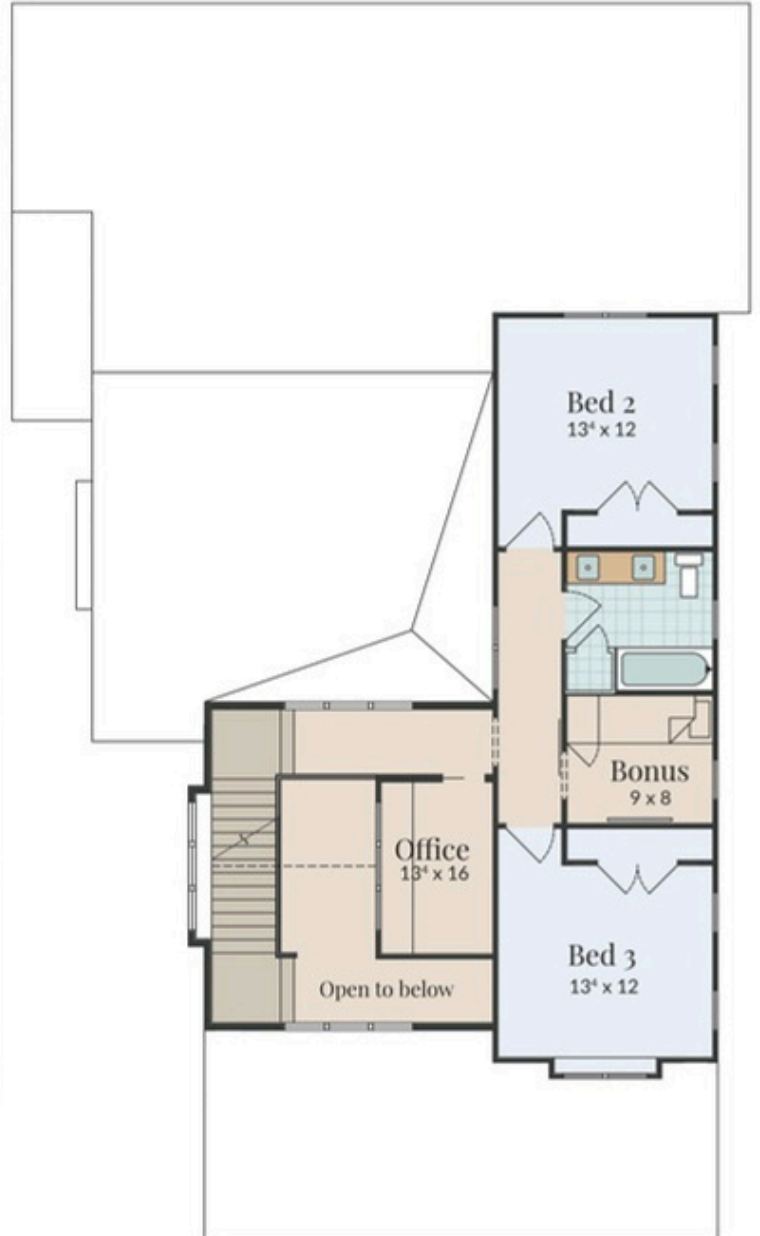
Rear Elevation

3 BEDROOM  
3 BATHROOM  
2 CAR GARAGE  
2,530 SQ. FT.

## First Floor



## Second Floor



Total Square Footage: 2,530  
Width: 42'-0" Depth: 72'-0"  
Garage/Covered Porch Square Footage: 905

Wrightsville  
Sound





## Features You'll Love

- Spacious great room with fireplace and built-in cabinets
- Oversized kitchen island and walk-in pantry
- Covered rear porch with direct access from the great room
- First floor graciously sized master bedroom suite
- Dedicated lounge/media room upstairs
- Overlook from second floor to great room

4 BEDROOM  
3 BATHROOM  
2 CAR GARAGE  
3,270 SQ. FT.

## First Floor



## Second Floor



Total Square Footage: 3,270

Width: 39'-8" Depth: 88'-0"

Garage/Covered Porch Square Footage: 1,086



*Pictured: The Seabreeze*





---

## Thoughtfully Designed Home Plans Tailored for Coastal Living

3 KEEL STREET, STE 1  
WRIGHTSVILLE BEACH, NC 28480

(919) 368-7120



For illustration purposes only. All representations, dimensions and specifications may vary from those depicted and are subject to revision, change and/or substitution without notice.